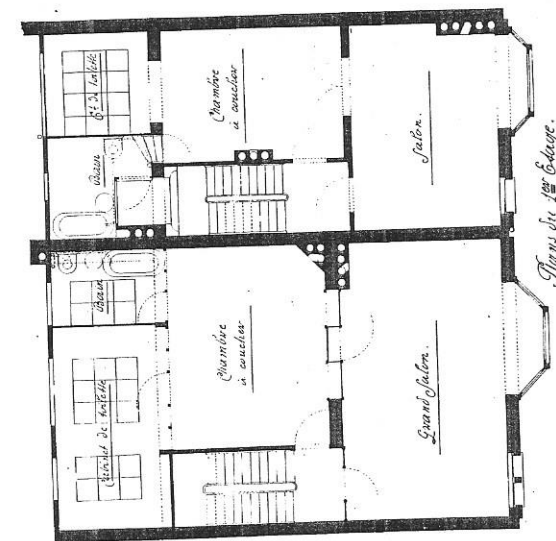
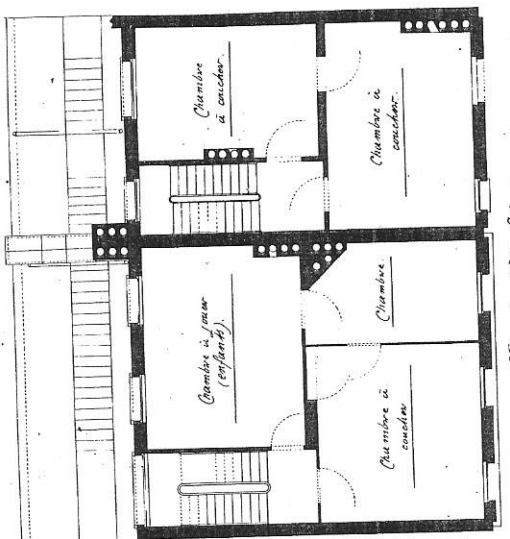


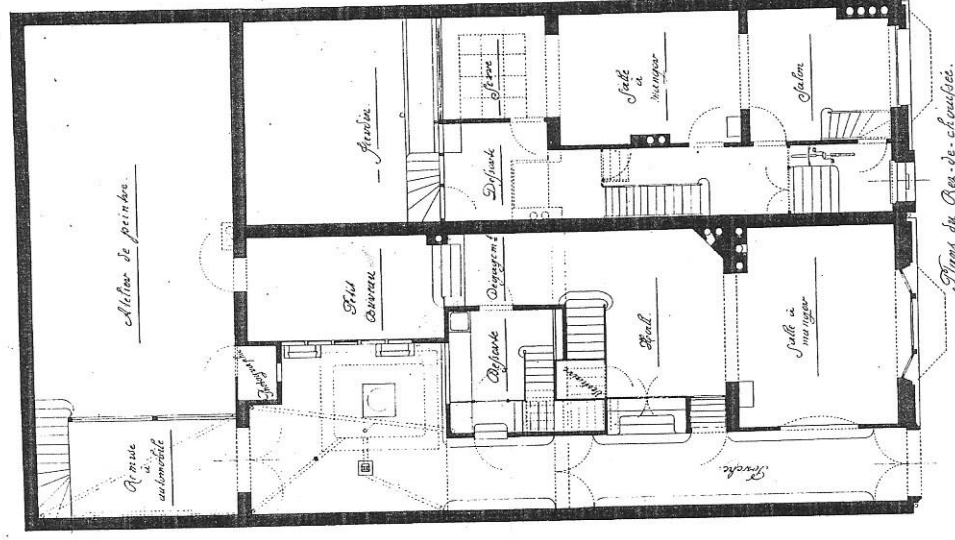
1902.



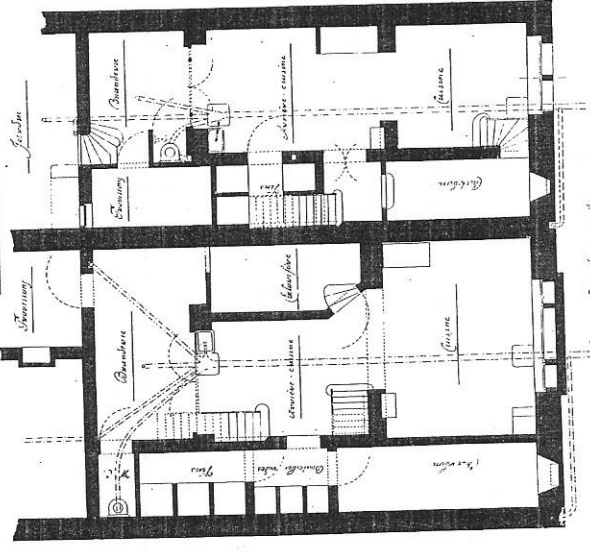
Plans du 1^{er} Étage.



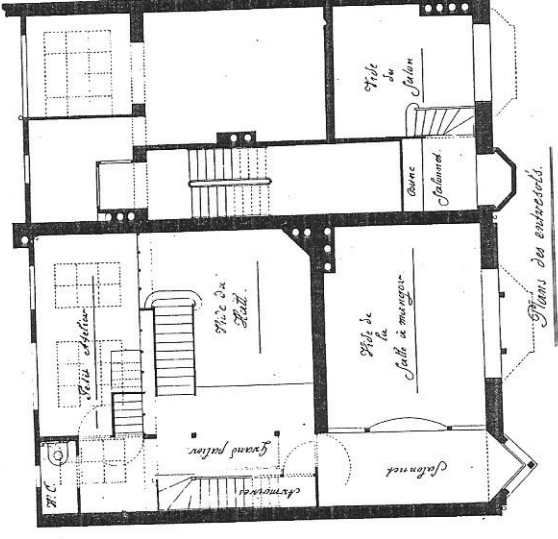
Plans du 2^{es} Étage.



Plans du Rez-de-chaussée.

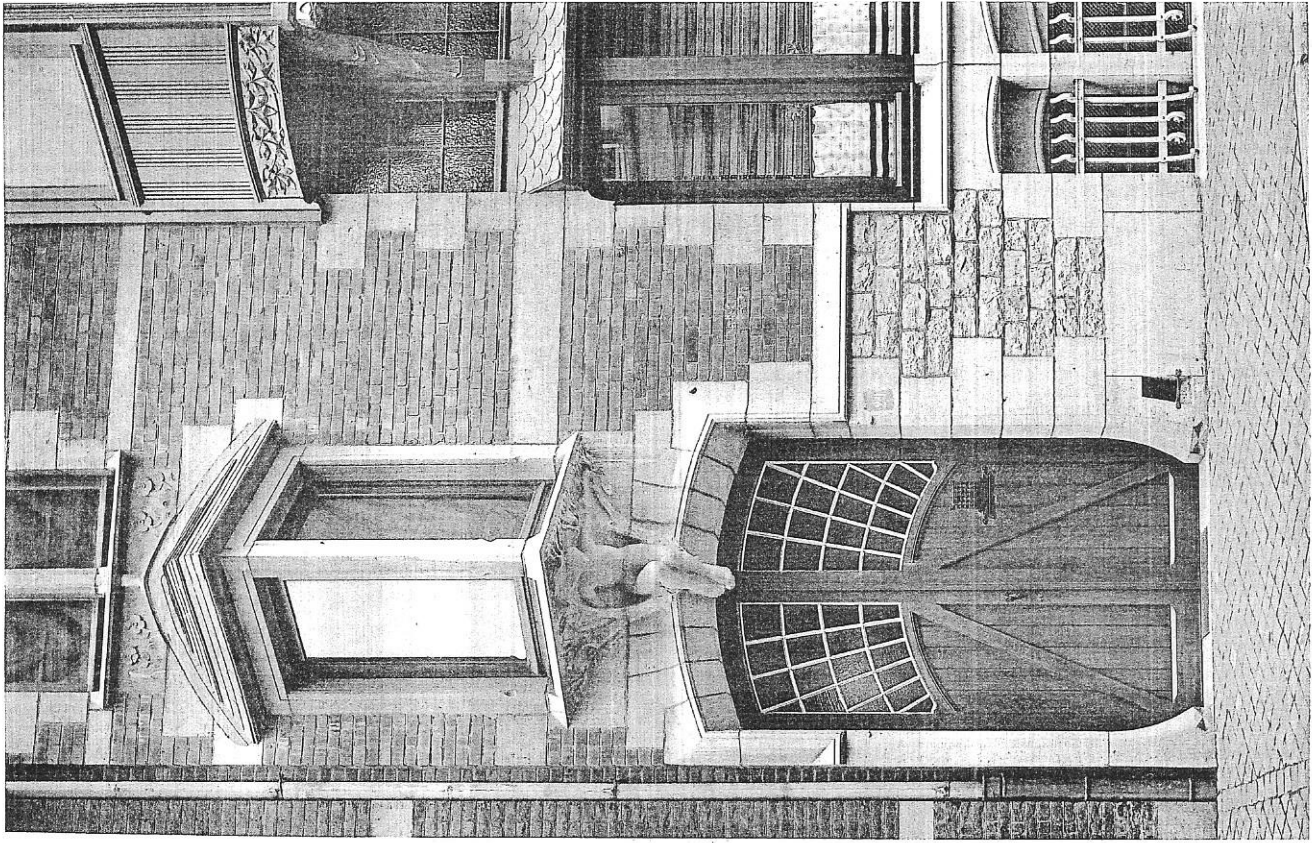


Plans des sous-sol.

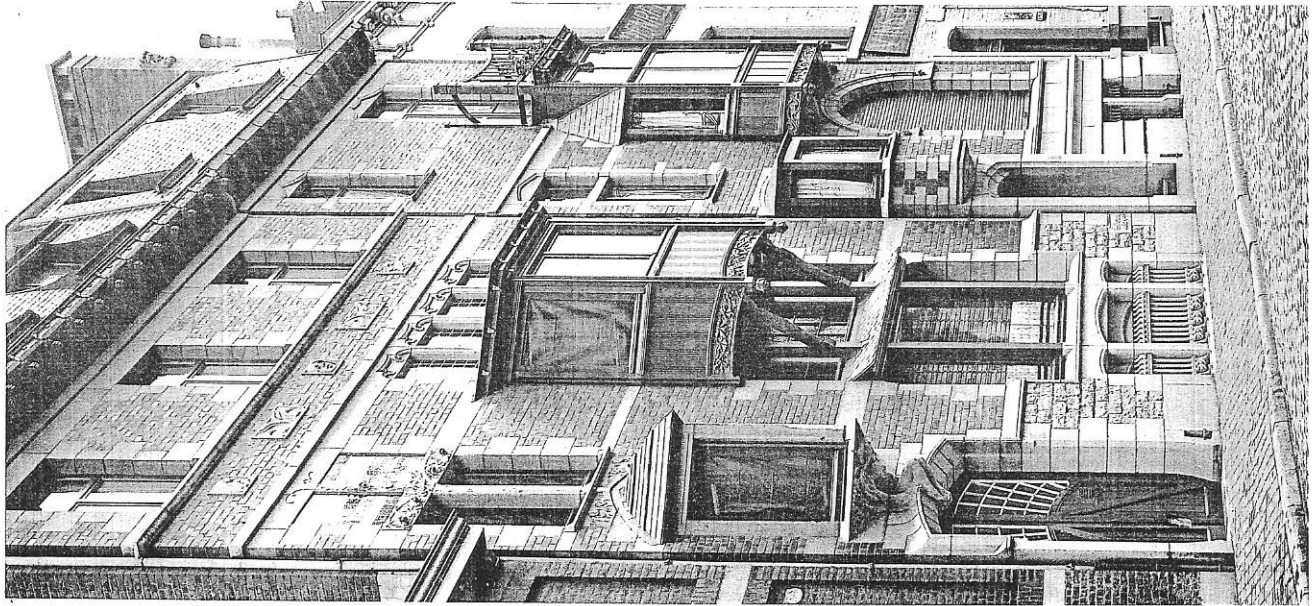


Plans des entrées.





Fragment de la Façade principale du n° 29



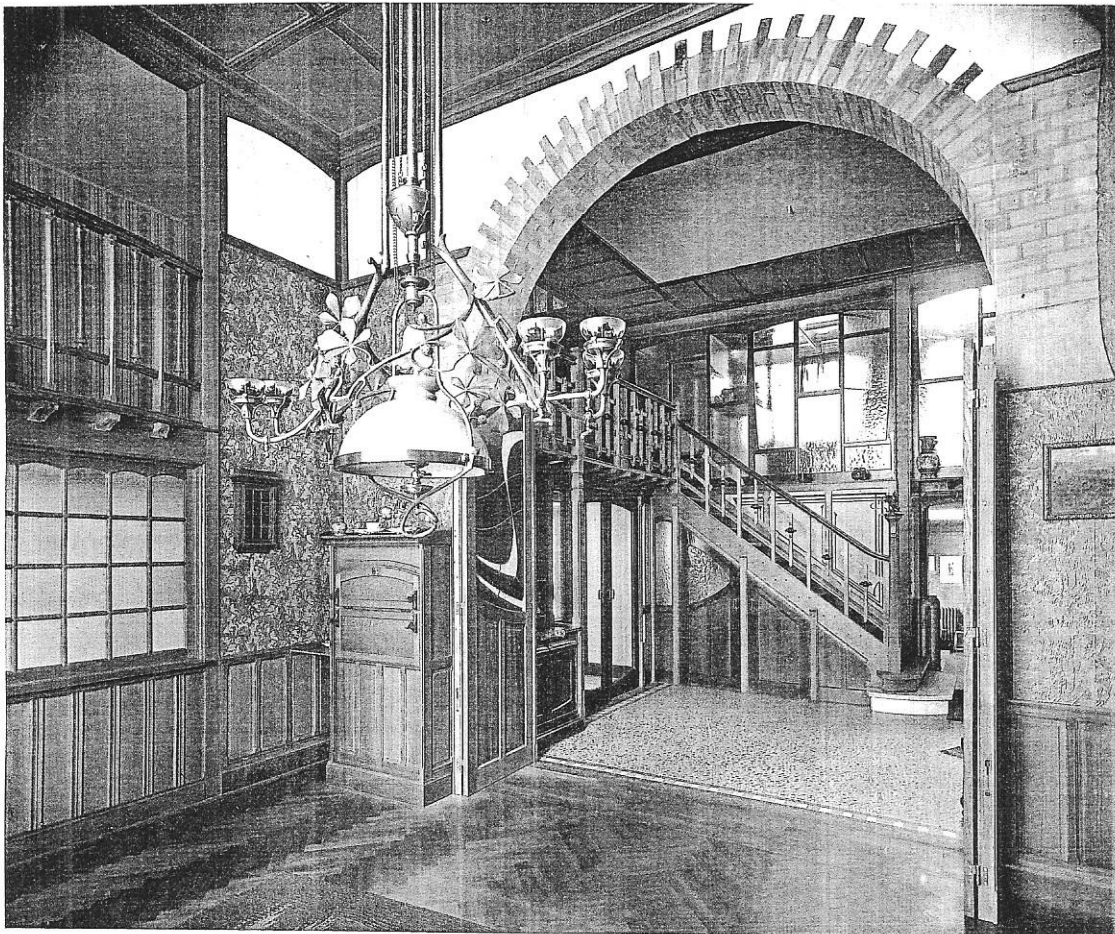
Façades principales



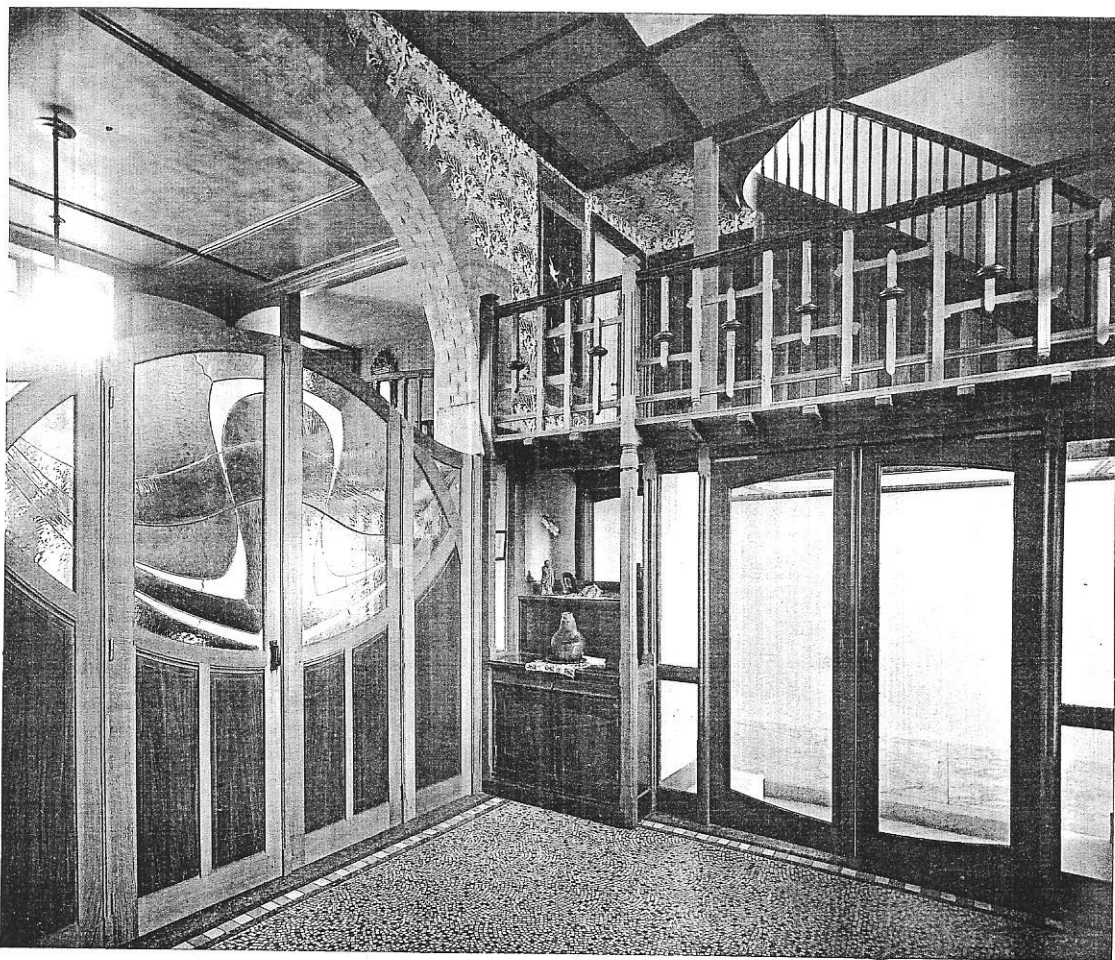
MAISONS RUE DE LA PAIX, A LIÈGE

Architecte : PAUL LASPAR.

PHOTODUPE C. AUBRY FILS, BRUXELLES.
Editeurs / F. JACOZ, Imprimeur, Louvain.
Editeurs / F. SVOOS, Architecte, Bruxelles.



Vue du Hall prise de la Salle à manger



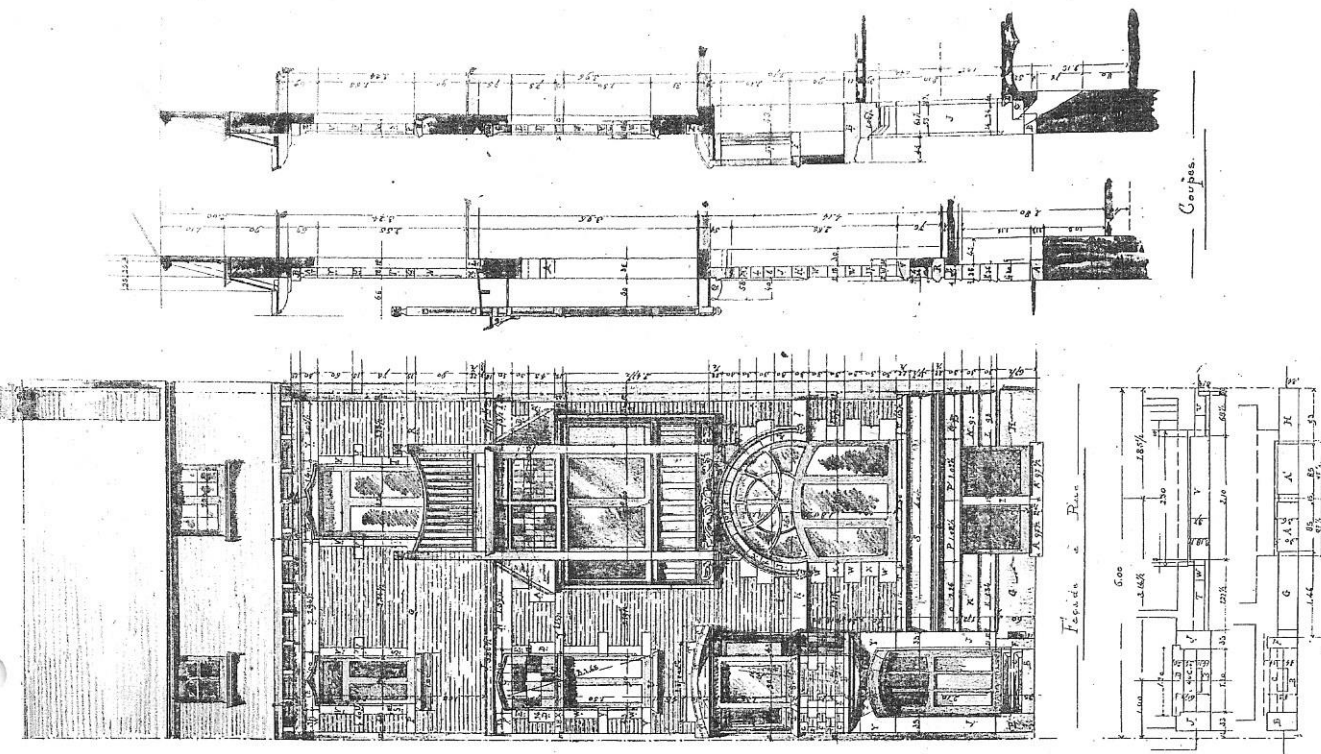
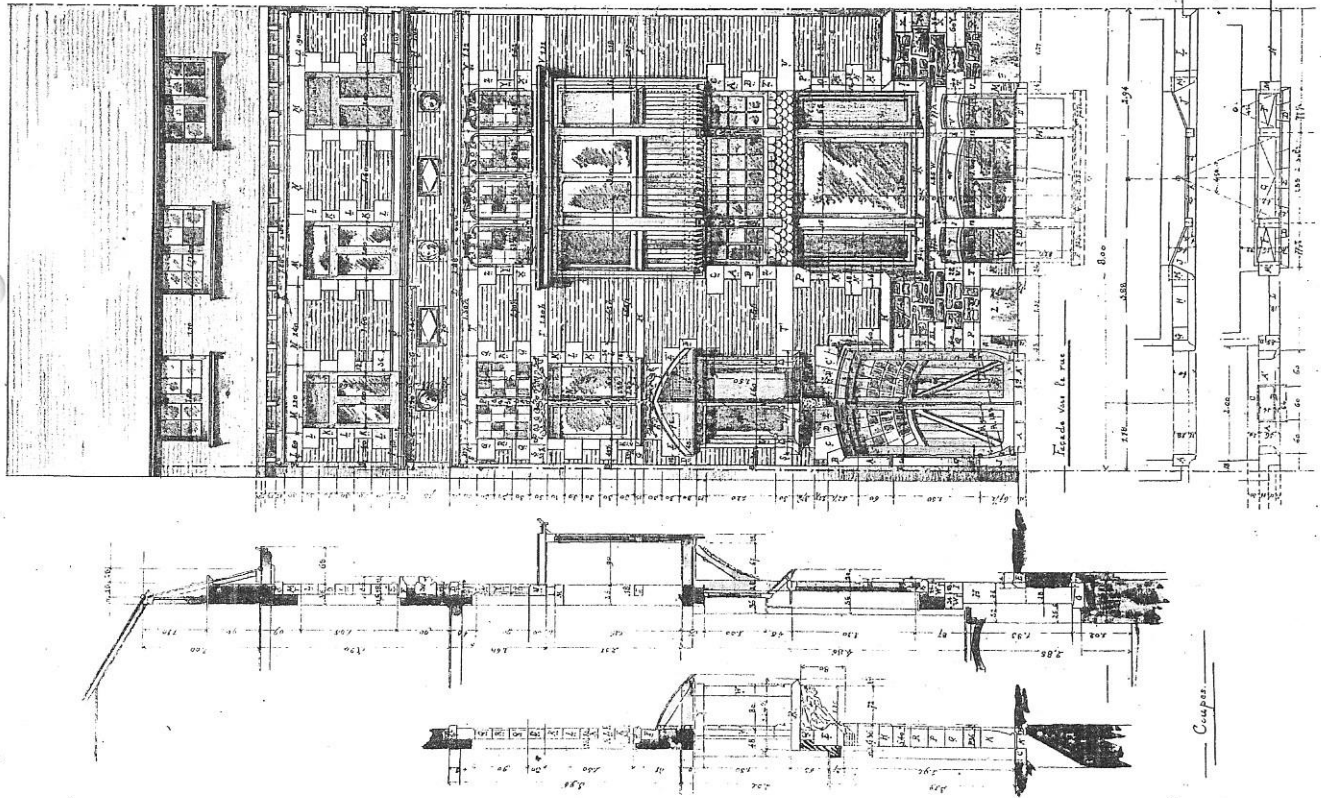
Vue du Hall prise du bas de l'Escalier

PHOTOMYK C. AUBRY FILS, BRUXELLES
 Editeurs | F. Ickx, Imprimeur, Louvain.
 F. Symons, Architecte, Bruxelles.



Pl. 48.

MAISON RUE DE LA PAIX, N° 29, A LIÈGE
 INTÉRIEURS
 Architecte : PAUL JASPAR.



PHOTOGRAPHE C. AUBRY FILS, BRUXELLES.
 Editeurs F. IONX, Imprimeur, Louvain.
 F. SYMOES, Architecte, Bruxelles.

MAISONS RUE DE LA PAIX, A LIÈGE
 FAÇADES
 Architecte : PAUL JASTAR.