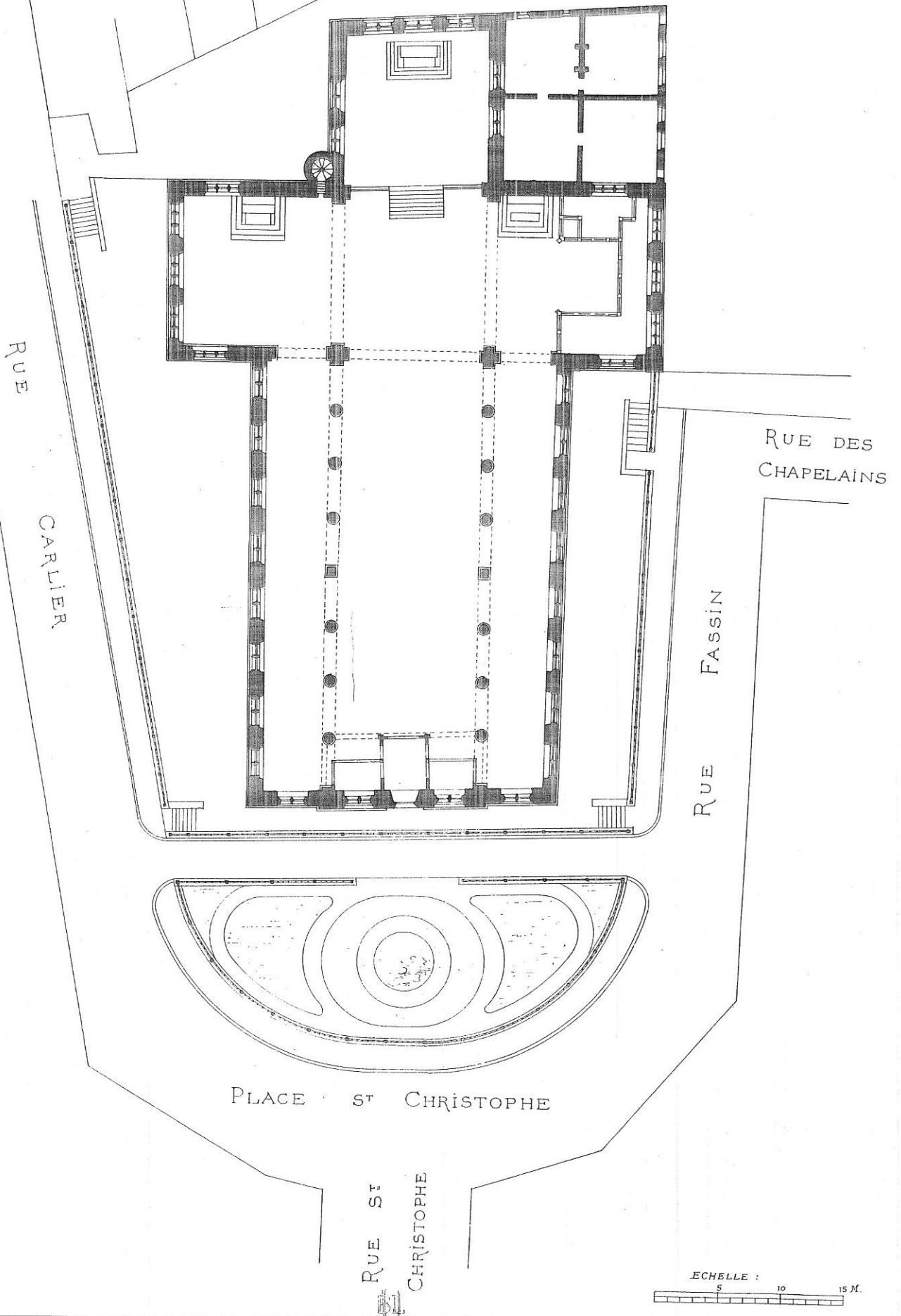
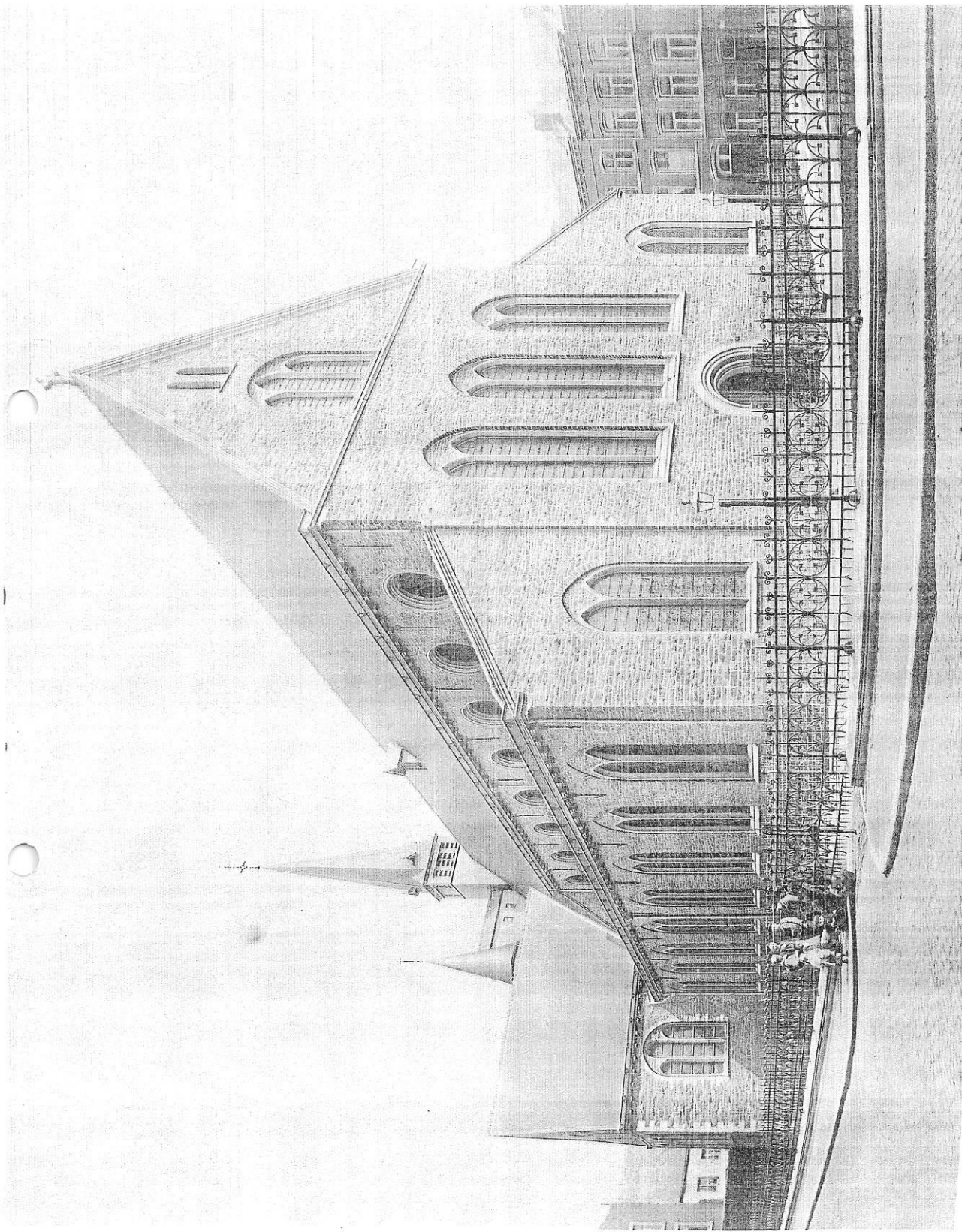


PLAN



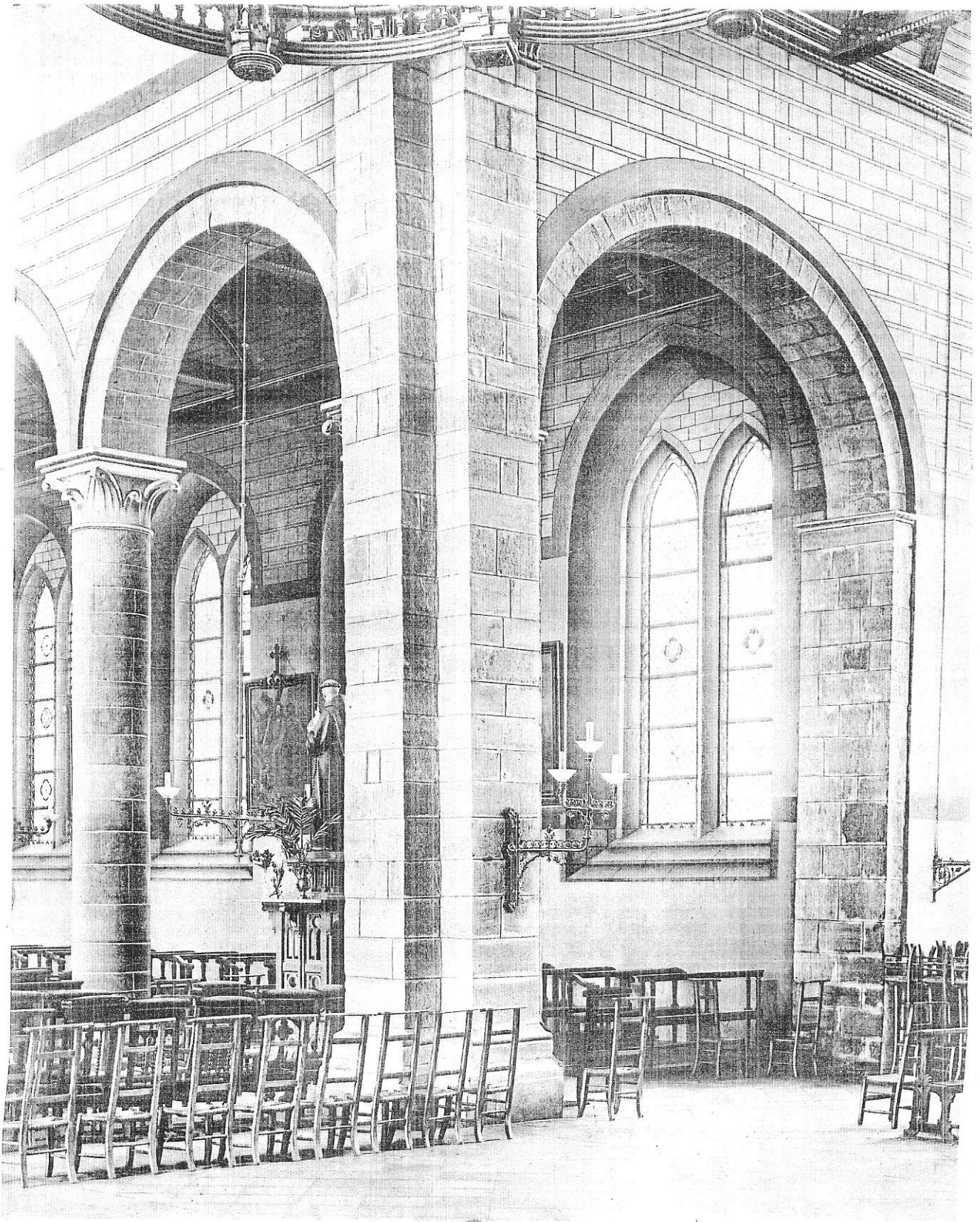


KL

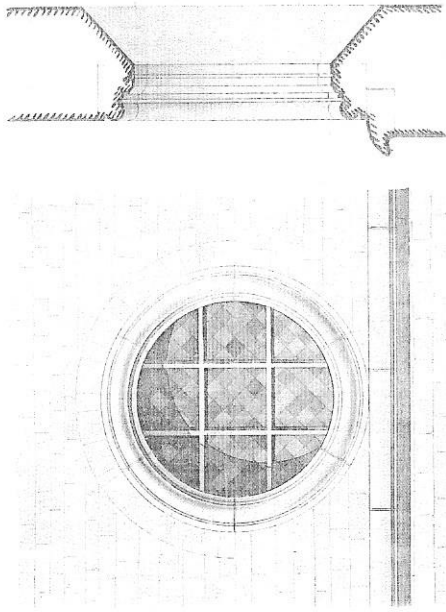
ÉGLISE SAINT-CHRISTOPHE A LIÈGE
COMMENCÉE VERS 1180
RESTAURÉE EN 1895 PAR AUG. VAN ASSCHE, ARCHITECTE A GAND.
FAÇADE PRINCIPALE.

Ed. Lyon-Claessen, Editeur, Bruxelles

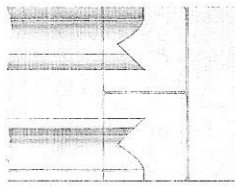
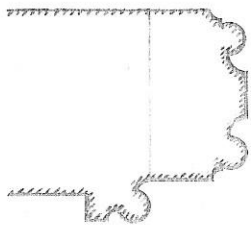




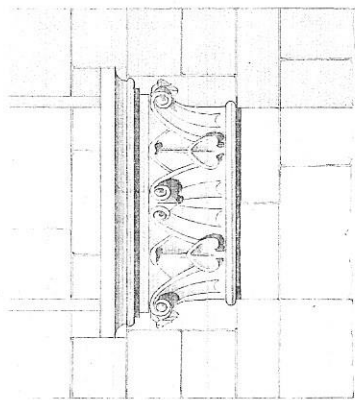




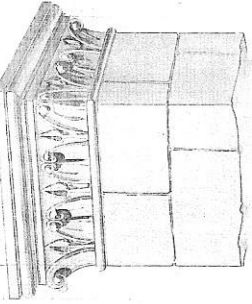
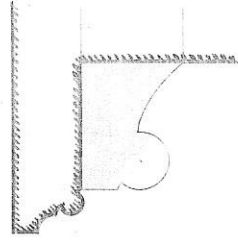
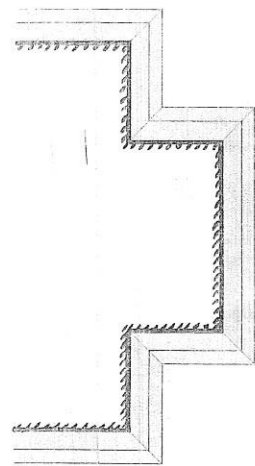
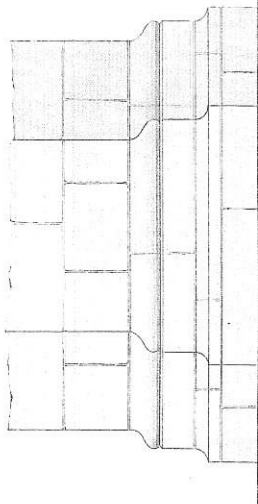
Corniche de la Grande Chapelle de la Vierge. Ech. 0.025 p.m.



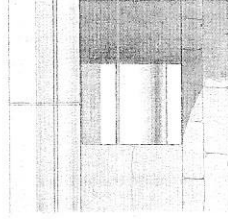
Chapiteaux de la Vierge. Ech. 0.05 p.m.



Grand Chapiteau. Ech. 0.05 p.m.



Chapiteaux de la Vierge.



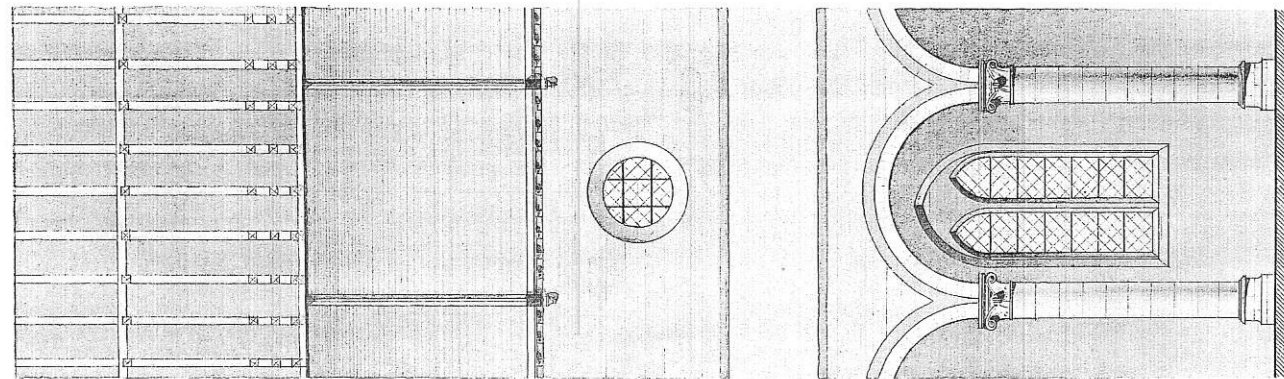
Corniche.

Ech. 0.025 p.m.

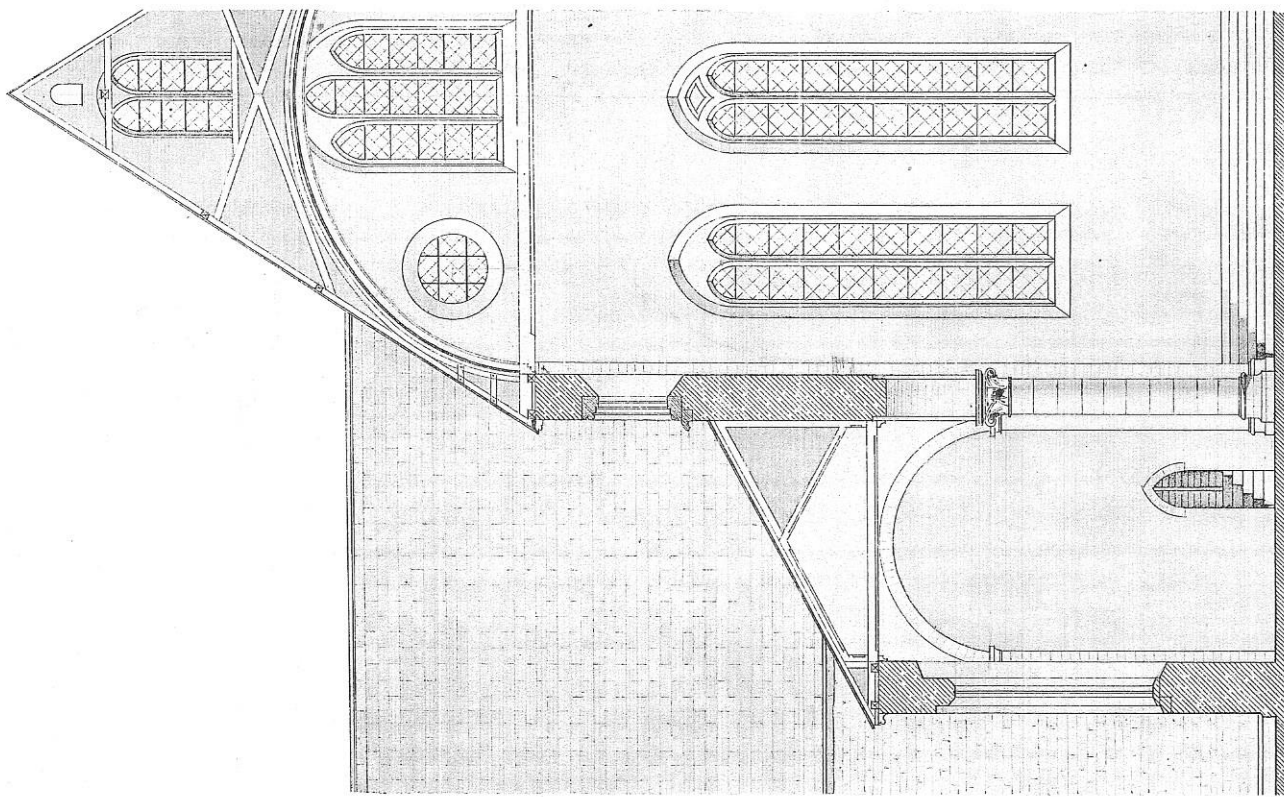


Plinthe.

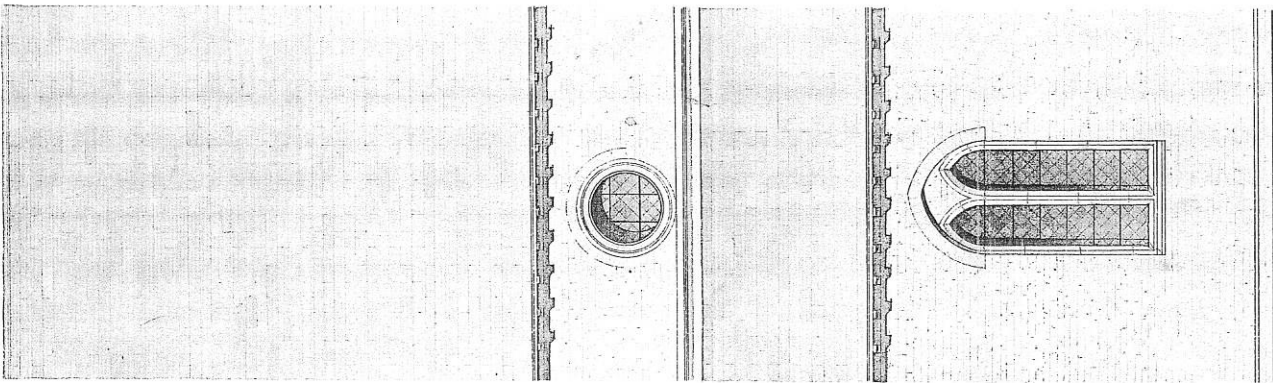




Trappe à l'intérieur



Coupe transversale sur les Nefs



Trappe à l'extérieur



